

The background features a large, stylized 'X' shape formed by overlapping geometric shapes in shades of blue and white. The top-right and bottom-left quadrants of the 'X' are filled with a light blue, blurred image of a hospital interior. The bottom-right and top-left quadrants are solid white. The bottom-left and bottom-right quadrants are filled with a solid, medium blue color. The Nixon Medical logo is positioned in the upper right quadrant, featuring the word 'NIXON' in a large, bold, dark blue font with a light blue 'X'. Below it, 'MEDICAL' is written in a smaller, dark blue, all-caps font. Underneath that, the tagline 'APPAREL & LINEN SERVICE SPECIALISTS' is written in a small, dark blue, all-caps font.

NIXON[™]
M E D I C A L
APPAREL & LINEN SERVICE SPECIALISTS

Medical Apparel & Linen Products

CATALOG

All About Service™

S I N C E 1 9 6 7

Nixon Medical is the leading provider of medical apparel and linens serving outpatient healthcare centers. From trusted laundry services to reliable customer service, the management of your practice and inventory will thrive with us as your partner.

Serving outpatient healthcare centers

In an outpatient facility where patients may return more often, it's especially important to deliver a positive and lasting experience during their appointment. Our Route Service Representatives, who specialize in servicing outpatient healthcare practices of all sizes help alleviate your staff's burdens with reliable delivery and expert inventory management while improving the patient experience with neat, clean and comfortable medical apparel and linens.

Whether part of a hospital, health system or stand-alone facility, here are just a few examples of outpatient facilities we serve:

Surgery Centers
Imaging Centers
Women's Health

Endoscopy Centers
General Practice
Oncology

MEDICAL APPAREL & LINEN PRODUCTS

Contents

Our comprehensive line of medical apparel and linens was developed with your outpatient needs in mind. From preferred linen products and medical apparel rental services to attention to detail that will have your shelves meticulously and optimally stocked, we take pride in every product we provide.

OUR SERVICE DIFFERENCE	4
SCRUB APPAREL.....	5
MEDICAL GARMENTS	10
PROTECTIVE APPAREL	12
PATIENT APPAREL	13
LINENS	16
TOWELS.....	17
CLEANING SYSTEMS.....	18
FLOOR MATS	19
STORAGE SOLUTIONS.....	20
EXPOSURE CONTROL.....	22
OUR LAUNDERING PROCESS	22
GETTING STARTED	23

Our Service Difference

The **Nixon Medical Service Difference™** is our proven process for seamlessly managing the inventory and distribution of medical apparel and linens to alleviate burdens and enhance the patient experience.





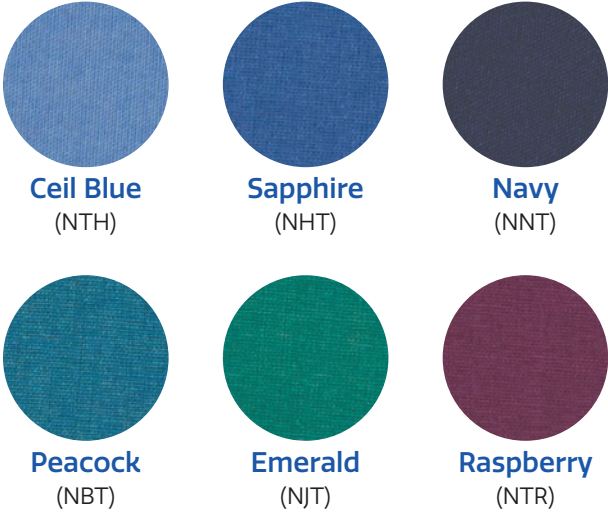
Color Coding

Scrubs are color coded by size on the binding and drawstring.



Scrub Colors

Scrub colors are approximate. Product samples are available upon request.



MED610

Unisex Scrub Top

- » Cotton blend fabric
- » Reversible
- » Color-coded binding by size
- » V-neck
- » Set-in sleeves
- » Top pocket



MED600

Unisex Scrub Pant

- » Cotton blend fabric
- » Reversible
- » Color-coded drawstring by size
- » Back pocket



MED849

Unisex Warm-Up Jacket

- » Cotton blend fabric
- » Collarless neckline
- » Color-matched knit cuffs
- » Snap front
- » Two lower pockets with scissor holders





MED893

Women's Tunic Top

- » Cotton blend fabric
- » Reversible
- » Color-coded binding by size
- » V-neck
- » Set-in sleeves
- » Top pocket



MED854

Women's Scrub Pant

- » Cotton blend fabric
- » Reversible
- » Color-coded drawstring by size
- » Back pocket

PerforMAX™

The Ultimate in Comfort

Your team works hard enough, keep them comfortable with PerforMAX™ scrubs. Designed for use in the most demanding fields and constructed with high-quality synthetic fabric, PerforMAX™ scrubs wick away moisture to keep the wearer cool and dry through their longest shifts. This soft, breathable scrub will quickly become a staff favorite.

MED810 **Unisex Scrub Top**

MED810 **Unisex Scrub Pant**

MED839 **Women's Tunic Top**

MED829 **Unisex Warm-Up Jacket**

All styles available in the following colors



Ceil Blue
(NTH)



Royal Blue
(JRL)



Navy Blue
(NNT)



Black
(DKW)



Wicking

PerforMAX™'s special blend of yarns maximizes wicking. Perspiration is pulled quickly into the fabric and then moved out to evaporate away.



Construction

Don't let the softness fool you. These scrubs are structured enough to hold all your daily necessities, such as cell phones, pagers, scissors and pens, without sagging or bagging.



MED810

PerforMAX™ Unisex Scrub Top


- » Reversible V-neck
- » Color-coded binding by size
- » Set-in sleeves
- » Top pocket

 *This item can be embroidered*

MED839

PerforMAX™ Women's Scrub Top

- » V-neck
- » Set-in sleeves
- » Three lower pockets with scissor holder

 *This item can be embroidered*

MED800

PerforMAX™ Unisex Scrub Pant

- » Reversible
- » Color-coded drawstring by size
- » Back pocket

MED829

PerforMAX™ Unisex Warm-Up Jacket

- » Collarless neckline
- » Color-matched rib knit cuffs
- » Snap front
- » Two lower pockets with scissor holder


 *This item can be embroidered*



LAN3138

Cotton Lab Coat

- » 100% cotton
- » Five buttons
- » Side vent openings
- » One top and two bottom pockets
- » Pleated back and faux belt


 This item can be embroidered



REDKP14WH
REDKP14LB

Men's Lab Coat

- » Performance blend poplin
- » Five buttons
- » Side vent openings
- » One top and two bottom pockets
- » Bar-tacked pencil stall
- » Available in white and light blue


 This item can be embroidered



REDKP10WH
REDKP10LB

Men's Counter Coat

- » Performance blend poplin
- » Blazer styling
- » Three buttons
- » One top and two bottom pockets
- » Bar-tacked pencil stall
- » Available in white and light blue


 This item can be embroidered



FAS482
FAS6480

Men's Heavyweight Lab Coat

- » Heavyweight twill
- » Four buttons (six for extra long sizes)
- » Side vent openings
- » One top and two bottom pockets


 This item can be embroidered



REDKP13WH
REDKP13LB

Women's Lab Coat

- » Performance blend poplin
- » Six buttons
- » Side vent openings
- » One top and two bottom pockets
- » Bar-tacked pencil stall
- » Available in white and light blue


 *This item can be embroidered*



REDKT34WH

Men's Staff Coat

- » Fine line twill
- » Pleated back and faux belt
- » Four buttons
- » Side vent openings
- » One top and two bottom pockets
- » Bar-tacked pencil stall


 *This item can be embroidered*



REDKP11WH

Women's Counter Coat

- » Performance blend poplin
- » Blazer styling
- » Four buttons
- » One top and two bottom pockets
- » Bar-tacked pencil stall


 *This item can be embroidered*

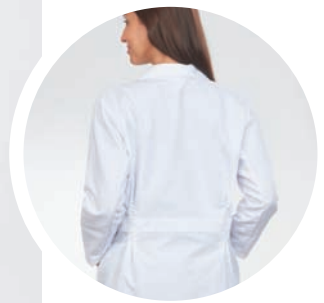


REDKT33WH

Women's Staff Coat

- » Fine line twill
- » Pleated back and faux belt
- » Four buttons
- » Side vent openings
- » One top and two bottom pockets
- » Bar-tacked pencil stall


 *This item can be embroidered*



FAS486

Women's Heavyweight Lab Coat

- » Heavyweight twill
- » Stylish accent belt
- » Five buttons
- » One top and two bottom pockets


 *This item can be embroidered*



FAS7699

Dental Jacket

- » Cotton blend fabric
- » Collarless neckline
- » Five snap closures
- » Two lower pockets with scissor holder


 This item can be embroidered



REDKP70WH

Unisex Cuffed Lab Coat

- » Performance blend poplin
- » Cuffed sleeves
- » Six snap closures
- » One top and two bottom pockets

 This item can be embroidered



MDT011201XLH (hangered)
MDT011201XLF (folded)

Unisex Fluid and Static-Resistant Gown

- » Barrier fabric front and back
- » Overlap at back
- » Ties at neck and waist
- » Knit cuffs
- » One size fits all



NIXTF72BL (hangered)
NIXTF-FOLD (folded)

Unisex Fluid and Static-Resistant Surgeon Gown

- » Barrier fabric front with breathable back
- » Overlap back
- » Snaps at neck and ties at waist
- » Knit cuffs
- » One size fits all



GANKB20LB
Traditional Gown

EXCLUSIVE NIXON DESIGN

- » Windsor poplin fabric
- » Ties at neck and waist
- » Overlap closure for modesty



GANKB20PK
Front Wrap Gown

EXCLUSIVE NIXON DESIGN

- » Windsor poplin fabric
- » Comfortable "Kimono" style
- » Ties at waist
- » Ideal for female patients



GANKB20EC
Snowflake Gown

- » Hospital-style rear closure
- » Ties at neck and waist
- » Superior paper gown alternative
- » Economic bulk packaging




GANKB20CC
Complete Coverage Gown

- » Extended length for greater coverage
- » Wrap-around back
 - » Side tie
 - » Extended sleeves
 - » V-neck

WAFFLE-WH

Waffle Weave Robe

- » Distinctive waffle pattern
- » Three quarter length sleeves
 - » Permanently sewn on belt
 - » Two sizes available

 *This item can be embroidered*



GANKB20GY

Three Armhole Gown

EXCLUSIVE NIXON DESIGN

- » Windsor poplin fabric
- » Complete wrap-around design
- » Provides ultimate modesty



NIXIVPLAID

IV Gown

- » Snap closures on sleeves
- » Extra large telemetry pocket





GANKB20TE

Plus Size Gown

EXCLUSIVE NIXON DESIGN

- » Windsor poplin fabric
- » 5XL size
- » Accommodates plus size patients
- » Provides dignity and comfort
- » Ties at neck and waist
- » Overlap closure for modesty



MEDSHORTNV

Unisex Scrub Shorts

EXCLUSIVE NIXON DESIGN

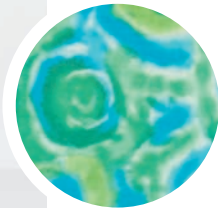
- » Navy blue cotton blend fabric
- » Offered in a full range of sizes
- » Color-coded drawstring by size
- » Ideal for patient rehab and imaging



GANKBPEDL

Large Pediatric Gown

- » Fun print fabric
- » Tie closure



GANKB20TG

Half Gown

EXCLUSIVE NIXON DESIGN

- » Windsor poplin fabric
- » Wrap-around cape style
- » Ties above the hip
- » Ideal for mammography



GANKBPEDS

Small Pediatric Gown

- » Fun print fabric
- » Tie closure



GANKB20NV

Traditional Robe

EXCLUSIVE NIXON DESIGN

- » Navy blue heavyweight fabric
- » Spa-style wrap
- » Attached belt



NIXWB00WH

A Pillowcase

- » Cotton blend sheeting
- » Fits standard-sized pillows

KNITSHEET

B Fitted Bed Sheet

- » Cotton blend sheeting
- » Knitted weave
- » Conforms to standard mattresses

NIXTBO2WH

C Flat Bed Sheet

- » Cotton blend sheeting
- » Blue hem stitching for easy identification

ADIND2081

D Beige Thermal Blanket

- » Heavyweight cotton blend material
- » Woven texture
- » Offers exceptional warmth

NIXTHRMWH

White Thermal Blanket

- » Heavyweight cotton blend material
- » Woven texture
- » Offers exceptional warmth



LTDBB2081

Bath Blanket

- » Cotton blend material
- » Soft hand
- » Offers moderate warmth



NIXGURNEY

Fitted Gurney Sheet

- » Cotton blend sheeting
- » Red hem stitching for easy identification



UNDERPAD

Underpad

- » White cotton blend face
- » Beige barrier back
- » Soft and absorbent, moderate-duty soaker
- » Lies flat without bunching or rolling

NIXTB00WH

Flat Drape Sheet

- » Cotton blend sheeting
- » Green hem stitching for easy identification

NIXTB112WH

Massage Sheet

- » Cotton blend sheeting
- » Pink hem stitching for easy identification
- » Fits a standard massage table

A NIXWC12WH
Wash Cloth
 » Terry cloth
 » Approximate size: 12" x 12"

B NIXMC00WH
Massage Towel
 » Terry cloth
 » Approximate size: 16" x 27"

C NIXHC00WH
Bath Towel
 » Terry cloth
 » Approximate size: 24" x 48"



NIXDTGR
Green Surgical Towel
 » Low-lint weave
 » Approximate size: 18" x 29"



NIXDTWH (WHITE) | NIXDTBL (BLUE)
Doctor Towel
 » Huck weave
 » Available in blue or white
 » Approximate size: 15" x 30"



NIXMP16WH

Wet Mop

STANDARD 16 OZ. SIZE

- » Blended fibers
- » Mildew and odor-resistant
- » Excellent absorption and release properties
- » Tailband improves coverage and control

NIXMPHNDWT

Wet Mop Handle

- » Fiberglass construction
- » Lightweight ergonomic design
- » Specially designed jaws securely hold mop head



MED217620

Microfiber Mop

STANDARD SIZE 18" LENGTH

- » Designed for highly efficient cleaning between procedures
- » Technical fibers hold up to six times their weight in fluid
- » Provides super-efficient cleaning power

MED217605 HANDLE
MED217610 FRAME

Microfiber Mop Handle and Frame

- » Aluminum construction
- » Lightweight ergonomic design
- » Telescoping handle adjust from 39" to 70"
- » Swivel frame with locking feature



MED217600

Microfiber Mop Bucket

- » Durable heavyweight plastic construction
- » Dividers secure mops in position
- » Holds 20 mops
- » Facilitates quick changes between rooms

M1135 (3'x5') | M1146 (4'x6') | M11310 (3'x10')

Fabric-Faced Mat

AVAILABLE SIZES 3'x5', 4'x6', 3'x10'

COLOR OPTIONS: NAVY, GRAY, RASPBERRY, BLACK, PECAN

- » High-twist nylon with heavy nitrile rubber back
- » Designed to capture dirt and release it during laundering
- » Resists movement caused by foot traffic and carts
- » Antimicrobial treated; kills germs on contact (gray only)

Custom Logo Mat

Makes a Great Impression!

AVAILABLE SIZES 3'x5', 4'x6', 3'x10'

- » Complimentary design service
- » Designs reproduced in amazing detail

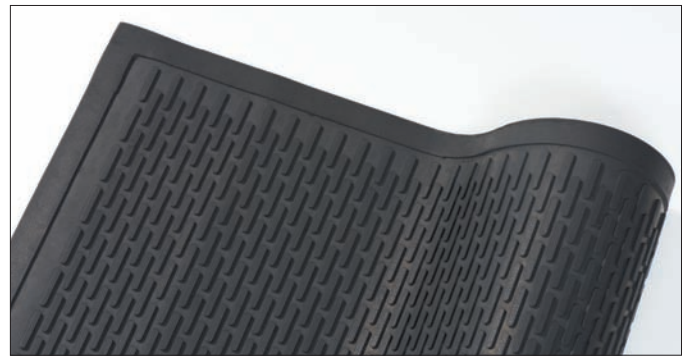


M1123FL (2'x3') | M1135FL (3'x5')

Comfort Flow Mat

AVAILABLE SIZES: 2'x3' and 3'x5'

- » 100% nitrile rubber
- » Designed for wet and dry environments
- » Antimicrobial-treated
- » Slip-resistant with anti-fatigue properties



M1135SS

Scraper Mat

AVAILABLE IN SIZE 3'x5'

- » 100% nitrile rubber
- » Designed for outdoor use
- » Cleated surface scrapes grime off feet
- » Extra-heavy construction keeps it in place



NIXPREMHAMP

Premium Hamper

- » Steel frame construction
- » Crack-resistant ABS plastic lid
- » Pedal-actuated lid
- » Multi-directional locking wheels



NIXHAMPER

Regular Hamper

- » Standard x-brace design
- » Folds flat for storage

NIXBAGRB

Laundry Bag

EXCLUSIVE NIXON DESIGN

- » OSHA-compliant biohazard label barrier fabric



NIXHANGER

Hanger Rack

- » Complimentary item
- » Holds hundreds of used hangers
- » No-charge recycling service



NIXRAILST3 (3' length)
NIXRAILST6 (5' length)

Stationary Garment Rail

- » Available in 3' and 5' lengths



NIXSOILBIN (without lid)
NIXBIN/LID (with lid)

Medical Laundry Cart

SIZE: 28 1/2" W X 47" D X 66 1/2" H

- » Ergonomically designed cut-out
- » Multi-directional wheels
- » Available with or without lid



NIXLOCFOLD10

Folded Garment Locker

SIZE: 16 1/2" W X 16" D X 77 1/2" H

- » Ten compartments
- » Cam lock system



NIXLOCDRP

Standard Laundry Lockup

SIZE: 16 1/2" W X 16" D X 77 1/2" H

- » Secure soiled linen storage



NIXLOCCOMP8

Hanging Garment Locker

30 19/32" W X 21 7/16" D X 80 13/16" H

- » Eight compartments
- » Ergonomically friendly hanging bar
- » Cam lock system

Exposure Control

Healthcare-acquired infections and their consequences are on the minds of patients and clinicians. Avoiding complications starts with hygienic textiles produced in a quality healthcare laundry.

Agency best practices, surveys, inspections, accreditations and standards of participation are designed to ensure a hygienic product and to improve healthcare quality. Nixon Medical supports this quality-of-care focus by providing only hygienically clean products and by using a healthcare-specific laundering and delivery process that is both compliant and accredited.

Nixon Medical also fulfills laundry documentation requirements related to surveys, inspections or accreditations. Regularly, customers are required by various governing bodies to furnish specific information related to the entire laundering and delivery process. That information, in any level of detail, is available upon request.

Laundering Process

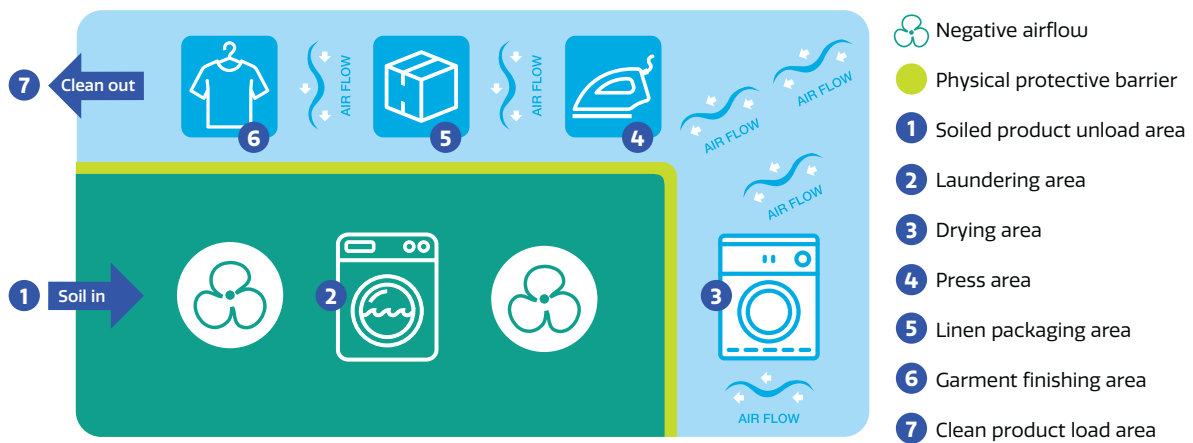
Nixon Medical operates the most advanced healthcare-specific laundering facilities in the country. The opportunity for cross-contamination is eliminated through negative airflow and physical separation between soiled and clean products in our facilities and delivery vehicles. We process all products using state-of-the-art laundering techniques that meet or exceed hospital standards.

Common documentation requests

- Exposure control plan
- Bloodborne pathogens requirements
- Facility cleaning policies and procedures
- HLAC accreditation
- Laundry facility statements

Common specification requests

- Laundering temperatures
- Wash formulas
- Process times
- Titration reports
- Universal precautions requirements
- Training programs



Your Local Representative Makes it Easy to Get Started

At Nixon Medical, attention to detail is of the utmost importance. We combine our stringent processes with compliant techniques and expert inventory management to ensure the highest level of service while optimizing your costs, storage, and peace of mind.

- » You choose your preferred medical apparel and linens from our product lines
- » We individually size each wearer at your facility for proper fit and comfort
- » We provide complimentary graphic design for customized apparel and floor mats
- » We handle embroidery and embellishment in-house
- » We develop a service schedule with you to meet your facility's needs
- » We launder and inspect all products in our state-of-the-art compliant processing facilities
- » We offer free repairs and automatically replace worn or damaged products
- » You receive regular visits from your dedicated Route Service Representative to pick up, deliver and manage your inventory

All About Service™
S I N C E 1 9 6 7

nixonmedical.com

TO ORDER OR REQUEST
A SAMPLE OF ANY PRODUCT

Call: 888.649.6687

Email: info@nixonmedical.com

Online: nixonmedical.com

NIXON[™]
M E D I C A L

All About Service[™]

SINCE 1967